

## Friends of Temple Sowerby School

We have a very active Friends groups that are committed to raising funds for the school and providing social events. During the year, they hold many events to which all are invited. All parents are automatically members of the Friends and we hope that you will be actively involved in raising funds for your child.

## Term Dates

### Autumn Term 2021

Start of Term—Thursday 2nd September—Thursday 16th December 2021

Half Term—Monday 25th October—Friday 29th October 2021

End of Term—Thursday 16th December 2021

### Spring Term 2022

Start of Term—Wednesday 5th January 2022—Friday 1st April 2022

Half Term—Monday 14th February—Friday 18th February 2022

End of Term—Friday 1st April 2022

### Summer Term 2022

Start of Term—Wednesday 20th April 2022

Bank Holiday—Monday 2nd May 2022

Half Term—Monday 30th May—Friday 3rd June 2022

End of Term—Wednesday 20th July 2022

**For further information or to request a booking form, please contact us:**

**Temple Sowerby Pre-School, Temple Sowerby, Penrith, Cumbria, CA10 1RZ**

**Tel: 017683 61512**

**E-mail: [admin@temp-sow.cumbria.sch.uk](mailto:admin@temp-sow.cumbria.sch.uk)**

**Forms can also be downloaded from our website:  
[www.temp-sow.cumbria.sch.uk/pre-school/](http://www.temp-sow.cumbria.sch.uk/pre-school/)**



# Welcome To Temple Sowerby Pre-School

**Tel: 017683 61512**

**E-mail: [admin@temp-sow.cumbria.sch.uk](mailto:admin@temp-sow.cumbria.sch.uk)**

**[www.temp-sow.cumbria.sch.uk](http://www.temp-sow.cumbria.sch.uk)**



**At Temple Sowerby Pre-School, we are delighted to welcome children from 3 years old to be part of our school family. We make provision for pre-school aged children in Class 1 with Miss Winter and a team of dedicated staff. Parents can use their grant funded hours and this provision is available from 8am to 5.30pm from Monday to Friday.**

**To book sessions, please complete a booking form and return it to the school office.**



## **What Ofsted (2017) says about us:**

- *pupils flourish, both academically and in their personal development*
- *staff care deeply about every child and put pupils at the heart of all they do*

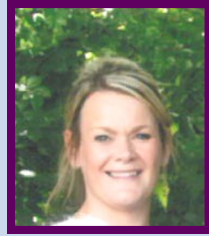
## Meet the Team.....



Mr Laithwaite  
Headteacher



Miss Winter  
Class 1 Teacher



Mrs Westley  
Higher Level Teaching  
Assistant

Children can be dropped off at school in time for the bell at 8.55am (unless already at Breakfast Club). They are brought out to the gate at the end of their session to be collected. The timings of our pre-school sessions are as follows:

### Sessions

8am—9am (Breakfast Club)

Morning session (9am—12noon)

Lunch Time (12noon—1pm to include lunch)

Afternoon Session (1pm—3.30pm)

After School Club (3.30pm—5.00pm)

Parents can use their grant funded hours and childcare vouchers for this provision, as part of the government's 30 hours of free childcare offer. To find out more and apply for the 30 hours please visit: <https://www.gov.uk/apply-30-hours-free-tax-free-childcare>

If you require any additional hours not covered by childcare vouchers, there is a cost of £4 per hour. School dinners cost an additional £2.40 per day.

### **Breakfast Club**

We have a breakfast club from 8am—9am daily. The above cost includes a healthy breakfast and children are supervised at all times, before being taken to class to start their pre-school session.

### **School Meals**

Our school meals are cooked by Kirkby Thore kitchen and are brought to school daily for 12noon. They are tasty, healthy and affordable. The menu is available to pre-order through the ParentPay system. If you would prefer to provide a packed lunch, please can you ensure it is healthy and does not include chocolate bars or fizzy drinks.

## Pre-school information

### **Uniform**

Although uniform is not compulsory for pre-school, if you wish for your child to wear uniform, it is a royal blue sweatshirt or cardigan (with or without the school logo) and a sky blue or white polo shirt. Trousers or skirts should be black or grey.

Embroidered sweatshirts and other uniform items are available from:

<https://myclothing.com/temple-sowerby-primary-school/14004.school>

### **Key items to bring**

- Pair of indoor shoes, plimsolls or slippers that are left in school to be worn in the classroom
- Pair of outdoor shoes (preferable wellies) which your child should wear to/from school and at playtimes
- Named water bottle
- Spare clothes which can be left on child's peg
- Waterproof over trousers/coat for winter months

### **Health**

Please let us know if your child has any medical conditions so that we can make adequate provisions.

Children who are unwell should not be sent to pre-school. If your child becomes unwell, we will notify you. If your child is absent from pre-school for any reason, please contact us as soon as possible, preferably by 9.30am.

### **Parental Involvement**

We believe that children learn best when parents/carers and teachers work together to achieve the best possible education for each child. We encourage parents to come into school to discuss concerns and to become involved in the life of the school. This can be through attending open days, workshops, assemblies and performances. Regular newsletters are produced and other letters, texts or emails are sent as necessary.